

# LAS350B

2.1ch 120W Soundbar w/ Subwoofer

## KEY FEATURES

2.1ch

120W

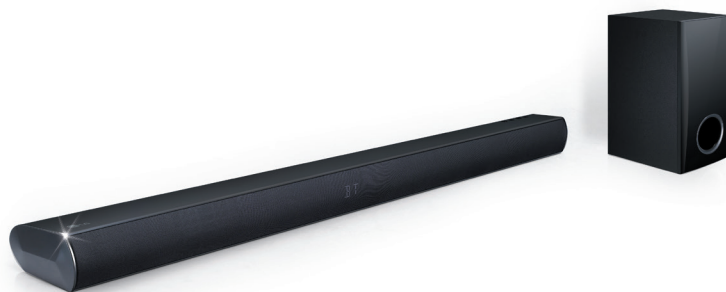
Bluetooth

Sound Sync Wireless

Wired Subwoofer

Music Flow Bluetooth App

40" and above TV matching



## PRODUCT HIGHLIGHTS

### 2.1 channel audio

2.1-channel audio takes your movies, TV shows and music beyond traditional stereo with the added bass kick of a dedicated subwoofer, imparting greater sonic power.

### Bluetooth®

Wirelessly stream music directly from your Smartphone or other compatible device for a seamless listening experience.

### Sound Sync Wireless

No wired connection needed! Simply link your LG audio product with your compatible LG HDTV wirelessly via Bluetooth, reducing the cable clutter behind/beneath your television.\*

## PRODUCT FEATURES

PRODUCT HIGHLIGHTS	
Wired Subwoofer	•
Sound Sync Wireless	•
Bluetooth Streaming	• (Up to 3 Devices)
GENERAL	
Channels	2.1ch
Total Power	120W
FEATURES	
Bluetooth Remote App (Android)	•
Bluetooth Stand-By	•
Universal Search	•
Music Curation	•
Auto Volume Leveler	•
Dynamic Range Control	•
3D Video Pass	•
SOUND MODES	
Standard	•
Music	•
Cinema	•
Flat	•
Boost	•
Treble/Bass	•
User EQ	•
AUDIO FORMAT	
LPCM	•
Dolby Digital	•
DTS Digital Surround	•
SPEAKERS	
Front	25Wx2 (tweeter+Mid) x 2
Subwoofer	70W (wired)
CONNECTIVITY	
Bluetooth (ver. 4.0)	•
LG TV Sound Sync (Bluetooth)	•
LG TV Sound Sync (Optical)	•
Optical Input	• (1)
USB Host	No (Service Only)
Portable In (3.5mm)	•

POWER	
Soundbar Power Consumption	21W
Soundbar Standby Power Consumption	<0.5W
Subwoofer Power Consumption	TBD
Subwoofer Standby Power Consumption	TBD
DIMENSIONS/ WEIGHTS	
TV Matching	40" and above
Sound Bar (WxHxD)	34.65 x 2.32 x 3.47
Subwoofer (WxHxD)	6.14 x 11.81 x 11.06
Soundbar Net Weight	4.2 lbs
Subwoofer Net Weight	6.4 lbs
Shipping Size (WxHxD)	37.17 x 9.06 x 18.09
Shipping Weight	13.9 lbs
INCLUDED ACCESSORIES	
Remote Control	•
Batteries	•
Wall Mount Bracket	•
WARRANTY	
Limited Warranty	1 Year Parts & Labor
UPC	719192598652

\*Interoperability and compatibility among Bluetooth devices may vary.

© 2015 LG Electronics USA, Inc. All rights reserved. "LG Life's Good" is a registered trademark of LG Corp. All other product and brand names are trademarks or registered trademarks of their respective owners. Design, features and specifications are subject to change without notice. Non-metric weights and measurements are approximate. Some features may require Internet access. Content and services may vary by product and are subject to change without notice. 4/13/15